



TS Workstation

Any middleware , integration, STP processing or data processing project will at some time create exceptions. Even normal transaction flows can from time to time be subject to delays and problems which, if not dealt with in a timely manner, can lead to bigger problems and unexpected costs.

Some systems may also benefit from manual entry or repair of transactions within the processing space.

Tradeshape Workstation is a tool ideally suited to these areas.

Why TSWorkstation?

Despite best endeavours to create simple straight through processing or data translation, it is a fact of life that something somewhere will break that flow. Even integrating internal systems can hit problems, systems can generate exceptions and these need to be notified and dealt with. Faced with large numbers of transactions or important transactions, prioritisation of work becomes beneficial to all.

With increased emphasis on accountability and auditing, manual input of transactions or repair needs greater control than ever before.

TS Workstation eases the implementation of fixing these issues.

Built on top of TS Integration Server, TS Workstation provides an easy to configure single point of entry or modification of data, a facility to view transactions current or historic, in a secure, audited environment.

Broken data – easy to fix.

With internal integration projects it is often found that data can be rejected due to missing static data or even incorrectly formatted data. These exceptions can be retrieved by the server and certain actions taken such as repairing the original data or setting up data and resending transactions. But it is often the case that these breaks can occur in several places and looking for them is not straightforward. We realise that data repair becomes essential in the world of high speed world of transaction processing.

Traditionally, enterprises have built small applications to allow these activities to take place, using products such as Visual Basic® or Powerbuilder®. TS Workstation offers a web based secure environment where exceptions can be monitored and repaired and more importantly audited.

No place to put it in your system – enter it manually.

It is often the case that although the majority of transactions are fed from external systems, some of these systems may be incapable of processing certain transactions and these need to be added manually.

TS Workstation provides enterprises to create simple data entry forms that will not only allow users to add data easily but will fully validate the data prior to it entering the system.

In fact, TS Workstation can also maintain static data to allow enrichment to take place and data to be stored within the TS data store, thus reducing the time of entry and, more importantly, reducing errors by allowing users point and click.

The screenshot shows a 'create message' dialog box with the following fields and values:

- 17T:Block Trade Ind: []
- 17U:Split Settlement Indicator: []
- 82a: Party A: A - BIC
- Party Identifier: []
- BIC/BEI: DEUT2222
- 87a: Party B: A - BIC
- Party Identifier: []
- BIC/BEI: MGAMGB2L
- 83a: Fund or Beneficiary: []
- 77D:Terms and Conditions: []
- MT 300 Mandatory Sequence B: []
- 15B: Start of Sequence: []
- 30T: Trade Date: date the transa

A red error message 'invalid BIC code format' is displayed next to the '87a: Party B' BIC/BEI field. The dialog has 'cancel' and 'save' buttons at the bottom.

Illustration 1: Creating a SWIFT message

The screenshot shows a simplified input form with the following fields and values:

- Reference: 123
- Fund: ESTT
- currency: GBP
- Value Date: []
- Account: 123
- Movement Type: BUY

A red error message 'This field is required' is displayed next to the Account field.

Illustration 2: Simplified input with validation

For auditing purposes the system can be configured to allow data entry to be verified or re-keyed before being released into external systems.

View the important data of your transaction.

Given a list of complex financial messages, such as SWIFT or FIX messages, a novice user has to understand what they are looking for, and a seasoned user should not have to look for individual fields.

From internal messages to these complex formats, TS Workstation can extract only the information deemed to be important to those users and present it in a more readable form. This can then provide tabular view of data by extracting information from fields as data is entered/processed. Combined with search and filtering this can allow a quick and simplified form of ad-hoc reporting.

Where do I start? Alerting and Prioritising

It can be said that one of the problems with exceptions is the prioritisation involved. It may be the case that large numbers of transactions stay in an incomplete state for some time and though beneficial for monitoring, this does not highlight any problem. However there may be a requirement to refine this list of transactions and alert users. For example if a transaction is subject to a certain deadline, or is deemed to be a high value transaction or has stayed in a state for an abnormal length of time.

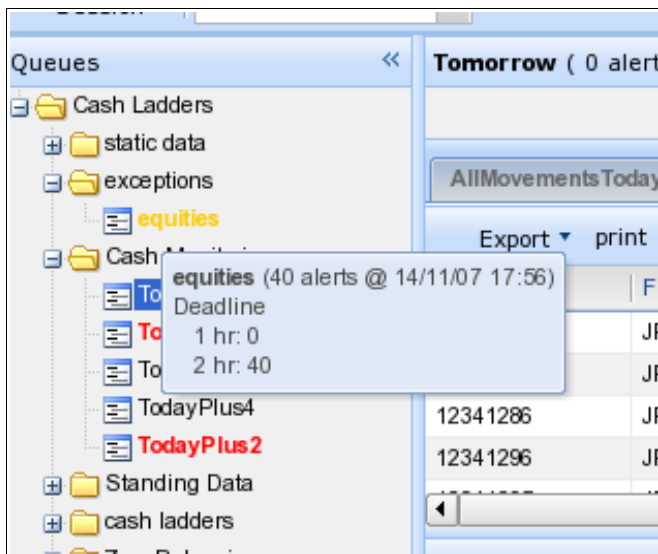
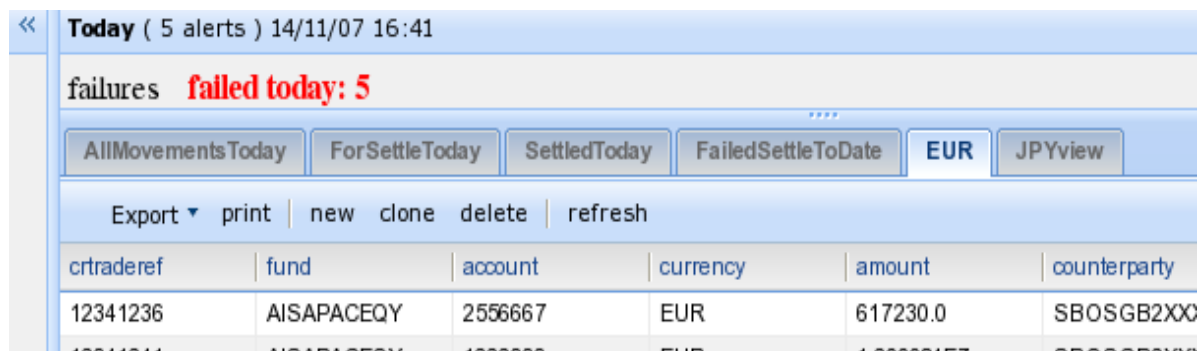


Illustration 3: Alerting on queues

TS Workstation's abilities to assist users prioritise their transactions efficiency is a key feature. Even if the user is not concentrating on that particular area, clear indication is given on the area in which these problems occur.

I want to see it my way...

Further use of Web 2 technology allows individual users to customise their view of their world – for example, a user wants to change the order of columns of data, sort differently,



Today (5 alerts) 14/11/07 16:41

failures **failed today: 5**

AllMovementsToday ForSettleToday SettledToday FailedSettleToDate EUR JPYview

Export print new clone delete refresh

crtraderef	fund	account	currency	amount	counterparty
12341236	AISAPACEQY	2556667	EUR	617230.0	SBOSGB2XXX
43214314	AISAPACEQY	4321431	EUR	4 321431.57	SBOSGB2XXX

Illustration 4: User defined view

or create their own custom filters of that data . Therefore, for ease of configuration, all users can see all transactions, but if I only process EUR/GBP trades, I can create my own view of these that will be available for every session I use.

What? When? Why? How? And Who? - Activities and Auditing

From message creation to user actions, any activity by either the system or the users is fully audited.

Users can get differing access rights for what data they can view, for what actions they can take on messages and for what information they can create/edit.

From a supervisory role it is also possible to allow users to be assigned transactions.

When performing actions on transactions, users can be asked to provide either an optional or mandatory note to explain that action. Even if no actions are taken, notes can be added at any time. All of this assists auditing of transactions and means that users, supervisors and auditors have a one stop shop to find out transaction details.

“That transaction from the 4th of last month...” - easy search facilities

Full search facilities are available to allow the user to search current and historical data.

Once a transaction is found, all of the history is available offering the perfect opportunity to see what happened.

What can I do? Security.

All activities and views can be restricted. This allows users interaction with the system to be configured across the board, from read only users to full supervisory “do everything” roles, as necessity dictates.

Configured on a flexible role based system, the burden of system administration is reduced to a minimum, allowing users to be allocated to roles and global changes be made to all of those users, simply by changing the role itself.

Multiple data silos – one installation fits all.

Within the product we realise that more than one legal entity may be involved so TS Workstation allows data to be strictly segregated keeping sources and static data apart.

Likewise for ASP or outsourcing providers, one installation can serve a series of clients and guarantees that the data for each of them is segregated.

Ease of Deployment

Installing third party software can be any enterprises nightmare. Compatibility with other vendors software or operating systems can lead to hours of testing and configuration, and can lead to problems in the future. TS Workstation has been designed to be web based and supports the major supported browser versions.

No additional software is required to be installed on the machine.

Key Features

User interaction

- Manual entry.
- Message creation.
- Static data maintenance.
- Transaction repair.
- Lookup facilities.
- User assigned notes.
- Audit trail.

Security

- Role based security.
- Restrictions on viewable data.
- Restrictions on activities undertaken by users.
- Multiple data silos – users assigned to one silo cannot see data from another.
- Web based security configuration.
- Secure HTTPS encrypted front end.

Architecture

- Java EE implementation for platform neutrality. Can work with any Java enabled platform including Microsoft Windows[®] and Linux.
- Full Web Based front end – no additional software to be installed on the client side PC.

- Supports IE 6+, Firefox2+, Opera 9+ and Safari (coming soon), with javascript enabled

For more information and pricing, please contact Tradeshape.

Tradeshape Limited

Unit 4
2 Drury's Avenue
Midleton
Co. Cork
Ireland.

Web: www.tradeshape.com

telephone: +353 (0)21 4639374

email: enquiries@tradeshape.com

① Indicates this functionality is only available on TS Integration Server

② Visual Basic and Windows are trademarks of Microsoft Corporation

③ Powerbuilder is a trademark of Sybase Inc.